



# MAXY 2M SERIES

## OBJECTIVE LENS 4X-LONG FOCUS

Magnification :  
20x-55x on 21.5" monitor

Working Distance :  
22.6 - 9.5 mm



MAXY-40



MAXY-140

## SPECIAL IMAGE EFFECT

- **EXPOSURE** : Shutter, defog real-time image processing
- **BACKLIGHT** : Wide Dynamic Range
- **NR** : Noise Reduction
- **MIRROR** : Left/ right, up/ down and 180° horizontal rotary
- **SMART D-ZOOM** Assign area A or/ and area B for digital enlarge
- **NEG.IMAGE** : Reverse image & image stabilization system
- **MOTION** : Detect moving object

SPECIFICATIONS	MAXY-140	MAXY-40
Magnification	3x - 43x on 24' monitor	12x - 132x on 21.5" monitor per 4x Lens
Working Distance	20mm - 300mm ( * )	22.5mm - 226mm
Field of View	11 - 142 mm ( * )	3.6 - 40 mm
CMOS Sensor	2M pixels	2M pixels
Signal Output	Full HD 1080P	Full HD 1080P & 60 fps
Dimension	68(L) x 66(W) x 169(H) mm	106 x 152(H)mm
Lens	C-Mount Lens	4x Objective
Light Source	Gooseneck light, adjustable	Wide angle LED
Power Supply	DC 5V/2A , Cable Length 180cm	
Focus	IR Remote Control Focus System for optional manual focus and Auto-focus	



## MAIN FUNCTION BUTTONS



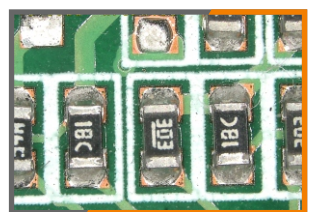
## MEASUREMENT MODE



- None
- Line
- Auxiliary Line
- Trace
- Multi Line
- 2 Points Circle
- 3 Points Circle
- Arc
- Ellipse
- Square
- Rectangle
- 3 Points Angle
- 3 Points Chamfer
- 4 Points Angle
- Polygon



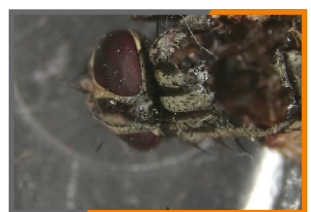
## APPLICATIONS



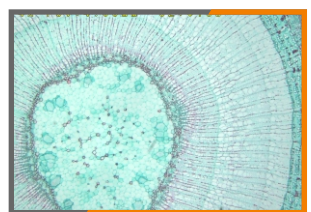
SMT PCB



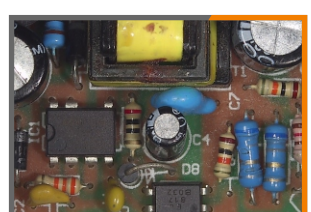
LED CHIP



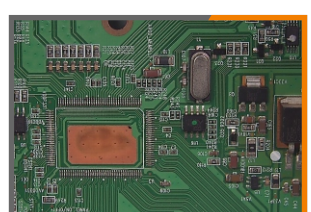
FLY



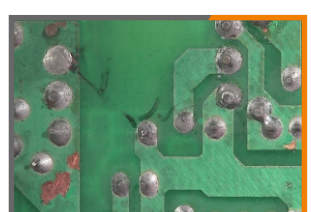
WOODY STEM



COMPONENTS



SMT PCB



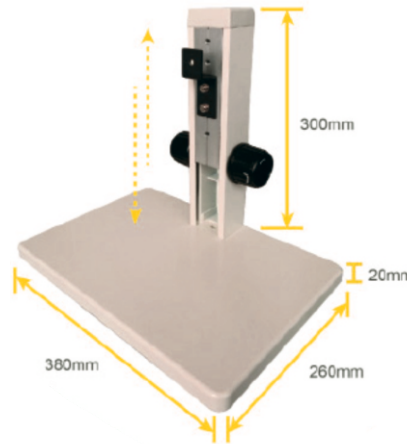
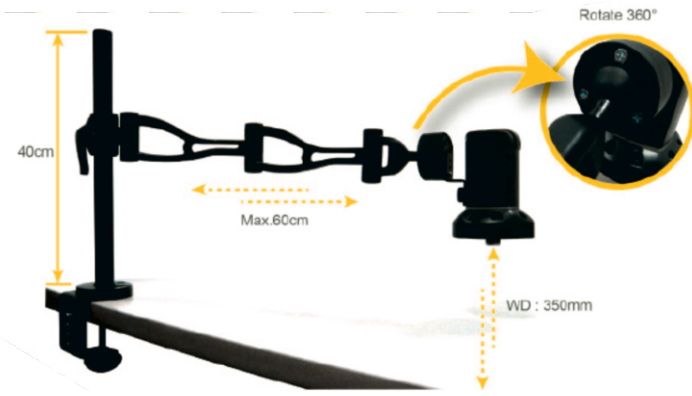
SOLDER CRACK



WATCH



## STANDS



## IMAGE CAPTURE BOX IMB-04



capture



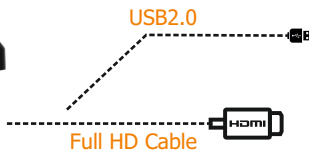
1080p @30fps



measurement



USB 2.0



### System Requirements

- Intel Core2 Duo 2 4GHz or above
- 1G RAM or above
- USB 2.0 Verified chipset : Intel Ivy Bridge Renesas(NEC), Fresco
- Win 7 & Win 8 32/64 bit

# SIPCON INSTRUMENT INDUSTRIES